




HOW TO WEAR YOUR JABRA HEADSET

Customize and adjust your Jabra headset to ensure optimal comfort, speech and hearing

Microphone positioning

It's important to properly position your boom arm so the microphone can filter out distracting background noise and you can enjoy the clearest, highest-quality conversation experience. Here are some tips to ensure you get the most out of your headset:

- **Microphone position:** The boom arm should always point directly towards your mouth for optimal call performance. Keep in mind that the microphone is very sensitive, so you won't need to speak loudly. Your voice will be picked up clearly – even at a lower volume.
- **Boom arm rotation:** Some Jabra headsets feature a boom arm that can rotate up to 270° or 360°. This allows you to place the earpiece with the boom arm on either the left or right ear, offering full flexibility.
- **Flex boom arm:** Headsets with a flexible boom can be bent until the microphone is correctly positioned in front of your mouth. Adjust the flex boom arm so that the microphone is maximum 2 fingers' width away from your lower lip.

Caring for your headset

Keep products clean by avoiding contact with dirty surfaces. When not in use, dock your headset in its charging base, or store it in a case/pouch, to protect it from scratches and dust.

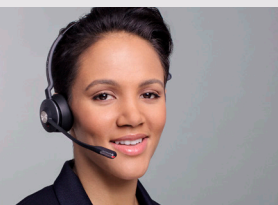
To clean your Jabra product apply normal dish soap and water to a cloth, making sure to wring out any excess liquid so the cloth is not dripping wet. Use soap and water only; do not use strong cleaning agents.

Remember to clean your ear cushions or EarGels regularly, and replace them when they show signs of wear and tear, or in case of heavy usage.

If you own a corded headset be especially careful not to twist or break the cable and do not remove the label on the cord, as it is important for warranty and repairs.

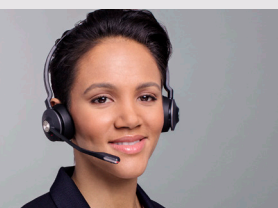
HEADSET WEARING STYLE

Mono headset with one earpiece



Ensure that the T-bar side (without the ear cushion) is centered approx. 5 cm / 2 inches above the ear, for all-day comfort.

Stereo / Duo headset with two earpieces



Make sure that the ear cushions are placed snugly over both ears.

Convertible headset with EarHooks and EarGels



Try out the different EarHook or EarGel sizes to find the perfect fit.

For more details on how to use your headset visit jabra.com/support